



NCD Leaders

Skills in epidemiology, biology, and statistics, and innovative ideas for the improvement of hygiene in Asia

Global Leaders

International people with developed English communication skills who are able to express logical thoughts in discussion and publication

Academic Leaders

Experience in large-scale, internationally-joint, epidemiologic research, with first-rate research skills

Leading Graduate Program for Reducing the Burden of Non-Communicable Disease (NCD) in the Asian Pacific Region

Network Leaders

An overlapping network including industry, university, and government

Dynamic Leaders

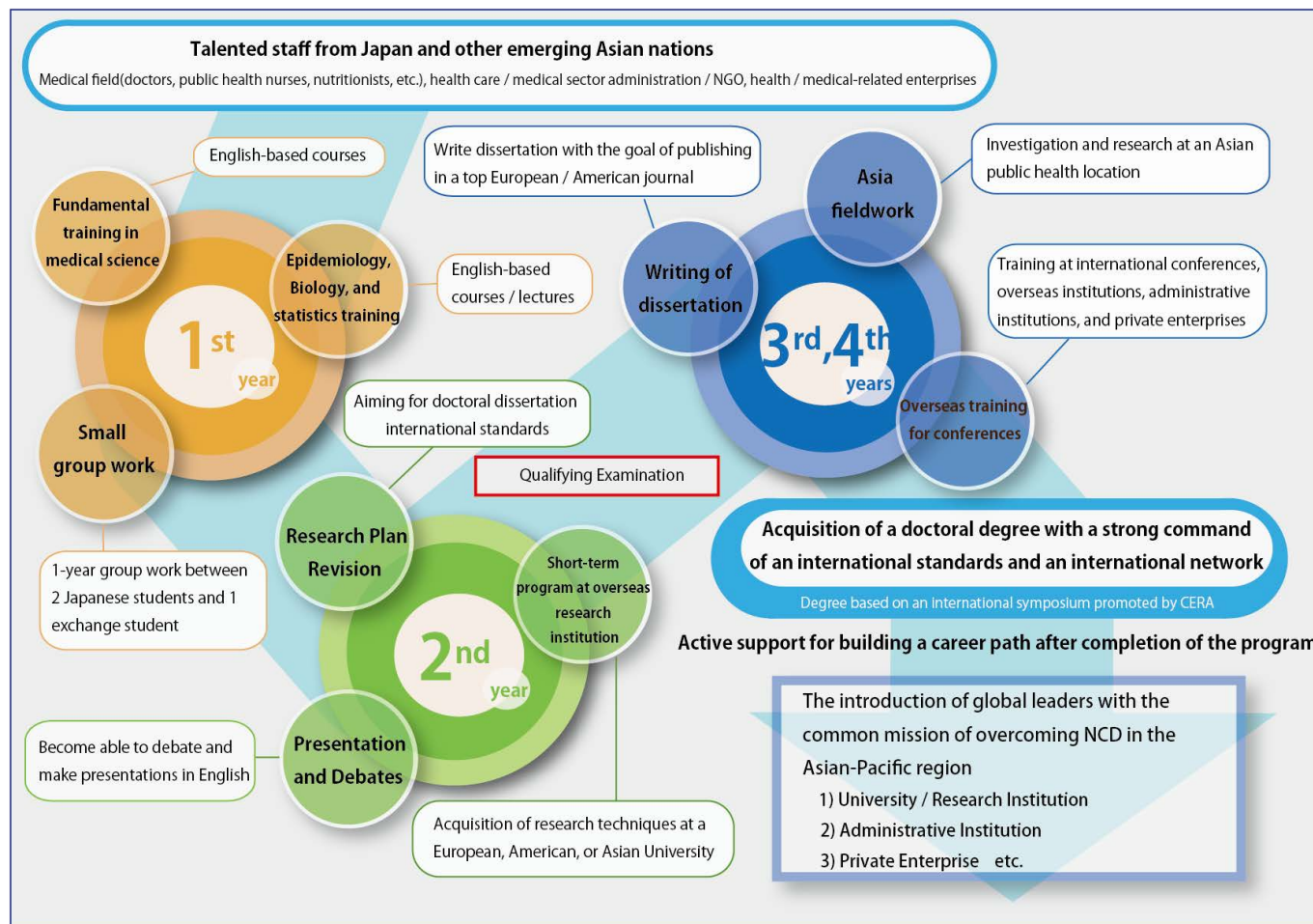
Ability to work in real life health facilities and administrative health-care agencies



Leading Graduate Program for Reducing the Burden of Non-Communicable Disease (NCD) in the Asian Pacific Region

In recent years, Non-Communicable Diseases (NCDs) have rapidly increased worldwide, which signifies a core health issue in the 21st century. The current Secretary General of the United Nations identified the issue of NCDs as a key mission. The United Nations Summit on NCDs has been convened, and government officials from various countries along with academic institutions are collaborating to address this issue. Unfortunately, the growing prevalence of cancer, cerebrovascular, and cardiovascular diseases as well as related risk factors including diabetes, hypertension, and dyslipidemia highlight NCDs as serious health problems in Asian emerging countries. Therefore, global leaders should be educated and trained to combat NCDs, which may in turn extend the healthy life expectancy in the Asian-Pacific region.

The solid research platform in lifestyle disease epidemiology at Shiga University of Medical Science serves as the perfect setting for The Graduate Program for Reducing the Burden of Non-Communicable Disease in the Asian-Pacific Region. This program will produce well-balanced leaders who have medical knowledge of NCDs as well as expertise in other fields of advanced science and technology including epidemiological methodology. Graduates of our program will be able to formulate plans for the improvement of public health in Asia and have personal networks that transcend the boundaries of government, industry and academia. As experts in measures against NCDs, graduates from our program may assume a broad range of leadership roles in government, industry, and academia both in Japan and abroad in order to solve the NCD issue in the Asian-Pacific region.



Curriculum with an emphasis on communication in English

This program will produce global leaders who can effectively debate in English. Coursework and research instruction are primarily delivered in English by internationally renowned epidemiologists or biostatisticians.



Education and research instruction centered around the only international NCD epidemiology education/research hub in Japan (the Center for Epidemiological Research in Asia)

The Center for Epidemiological Research in Asia (CERA) at our university is the only international education and research hub in Japan for the study of the epidemiology of NCDs, and it plays a central role in epidemiological research of lifestyle diseases in Japan along with a large-scale NCD epidemiological database that was developed at Shiga University of Medical Science. Our program provides a unique and world-class graduate education and research instruction by making maximum use of CERA and this database.



Training of active top leaders who have an international sense

Shiga University of Medical Science has an extensive global network of affiliate schools, research institutes, government agencies, and health-related companies in Europe, the United States, and Asia. Students enrolled in our program will be able to tap into this global network for training and research opportunities. In addition, students will also participate in fieldwork at public health practice sites in Asia.



Education system with maneuverability characteristic to a university focused on a single discipline

Our graduate education system will be restructured. The Leading Graduate Program for Reducing Burden of Non-Communicable Disease (NCD) in the Asian Pacific Region will be established in Course for Researches in Advanced Medicine and educational and research resources at this university will be focused on this program. By doing so, flexible and cross-sectional education in specialized fields will be provided in this program by the teaching staff from nearly all the departments of our university. Additionally, transition from conventional lecture-based graduate education to training-based graduate education will make the program more practical.

It is expected that most students enrolled in this program will be provided with monthly stipend for supplies and living expenses so that they can concentrate on their studies and research, in line with the goals of the program. The current stipend is approximately 150,000 per month. This can vary from time to time.

Administrative Office / Program for Leading Graduate Schools Shiga University of Medical Science

Seta Tsukinowa-cho, Otsu, Shiga 520-2192, Japan

Phone : +81-77-548-3657

E-mail : ncdlead@belle.shiga-med.ac.jp

<https://cera.shiga-med.ac.jp/ncdlead/>